



Color shown 700 Brownstone

 **Shaw** Tile & Stone™
shawfloors.com

Domus | *porcelain tile*



Tile & Stone™

shawfloors.com

Shaw Industries, Inc.
PO Drawer 2128, Mail Drop 02601
Dalton, GA 30722-2128
1-800-441-7429

Domus

Features

Fine Italian leather handbags and shoes have been used for decades to round out the perfect outfit. Shaw now brings you the look of designer leather in a porcelain tile. Mimicking the finest time-worn, full grain leathers, Domus is available in five rich and appealing colors — three field tile sizes including rectangular options, linear mosaics in solid and blended options and trim pieces. Use this inviting transitional look in your design to create comfort, warmth and sophistication.

- Resembles time-worn, creased leather—a fresh designer look that stirs the imagination
- 5 rich and appealing colors
- Versatile but perfect for cozy, comfortable setting
- PTCA Certified Porcelain Tile
- Made in Brazil

Colors



100 Sand 200 Wheat 300 Spanish Moss 700 Brownstone 900 Graphite

Accents

RANDOM LINEAR MOSAIC



100 Sand 101 Multi 200 Wheat



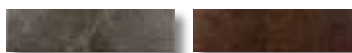
300 Spanish Moss 700 Brownstone 900 Graphite

Trim

BULLNOSE



100 Sand 200 Wheat



300 Spanish Moss 700 Brownstone



900 Graphite

Tile Sizes

Field Tile	Style
12x12	CS82F
18x18	CS83F
12x24	CS84F

Trim	Style
Bullnose	CS88F

Accent	Style
Random Linear Mosaic	CS85F

Technical	
Wear Rating Group	4 and 3*
Break Strength	250 lbs.
Water Absorption	< .5%
COF (Wet)	.55

*Wear rating 3, color 200, 300, 700 & 900

This tile features random variations of shade and texture within each carton. To insure optimum appearance, it is imperative that tiles from various cartons be continually blended during installation. Placement of tiles should be decided on before beginning installation.

*OSHA (Occupational Safety and Health Administration) has established a recognized industry standard of 0.5 (wet and dry) for slip-resistant surfaces. The Americans with Disabilities Act (ADA) recommends, but does not require, "a Static Coefficient of Friction of 0.60 for accessible routes and 0.80 for ramps." ADA does not specifically state that 0.60 is both a dry and a wet requirement. It is important to note that any tile or other hard surface flooring can become slippery when wet or improperly maintained. Products installed in an exterior application must comply with applicable ANSI 108 series of the "American National Standard Specifications for the Installation of Porcelain Tile" and comply with TCA installation methods applicable to installation conditions.



Approved Usage

